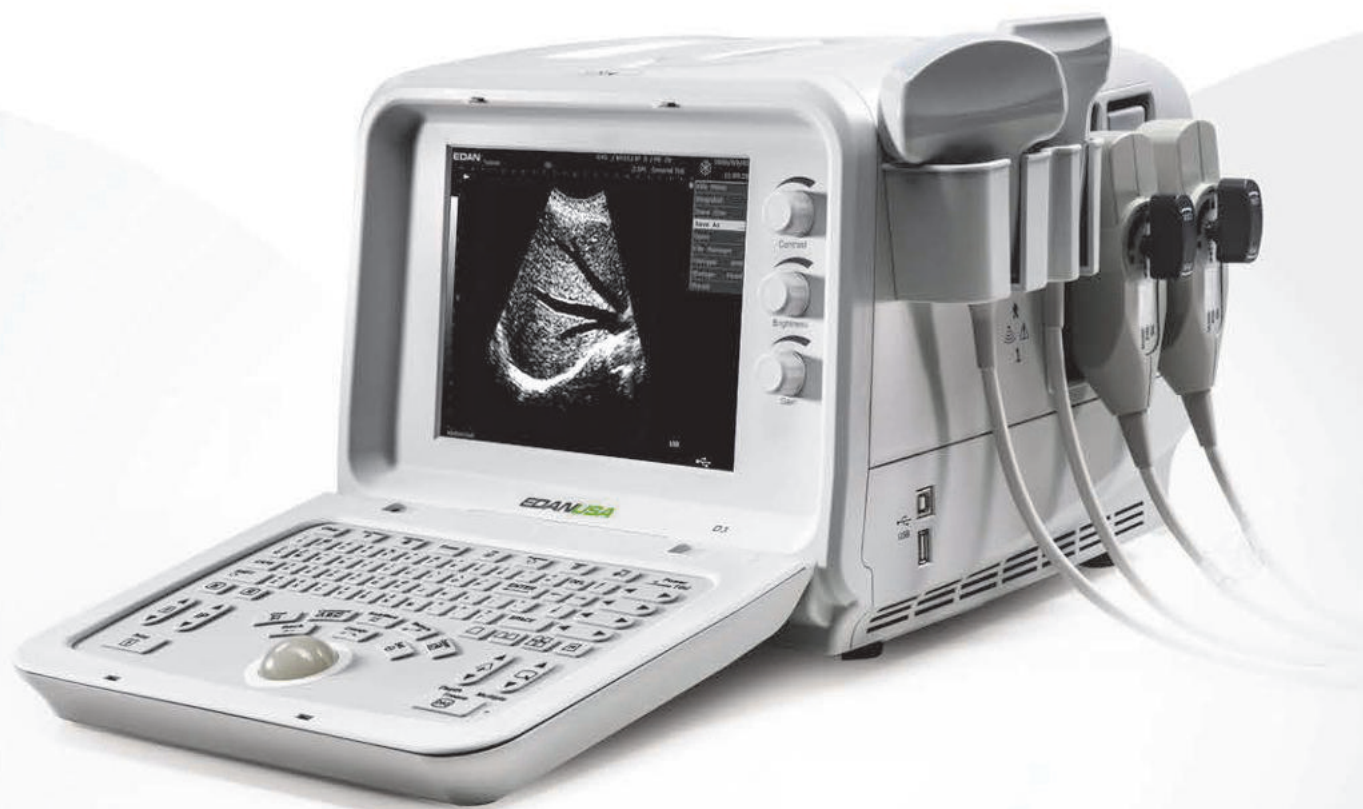


EDANUSA
www.edanusa.com

D3



■ **Digital Ultrasonic Diagnostic Imaging System**

Care for Health



D3

Technical Specifications



Convex array:
C361-1



Convex array:
C341



Micro-convex array:
C321-1



Linear array:
L741



Endovaginal:
E611-1



Endorectal:
E741

General:

Imaging mode: B,2B,4B,B+M,M
 Gray scales: 256
 Display: 10" non-interlaced
 Transducer frequency: 2.0-10.0 MHz
 Transducer connector:
 1(standard) 2(optional)
 Beam-forming: Digital Beam-forming
 Dynamic Receiving Focusing
 Real-time Dynamic Aperture
 Dynamic Frequency Scanning
 Dynamic Apodization
 Tissue Harmonic Imaging
 Tissue Specific Imaging
 Scanning angle: up to 152 degree (depending on transducers)
 Scanning depth (mm):
 from 19 to 245 (depending on transducers)
 Applications: Abdomen,obstetrics, small parts, gynecology,
 urology, cardiology, orthopedics

Imaging Processing:

Pre-processing: Dynamic range
 Edge enhancement
 Frame correlation
 Line correlation
 Smooth
 AGC
 4-segment TGC adjustment
 IP (Image Process)
 Post-processing: Gray map
 Gamma correction
 Rejection
 Black / white reverse
 Left / right reverse
 Up / down reverse
 Image rotation at 90 degree interval

Functions:

Cine loop: 128 frames bidirectional cine-loop
 Zoom: X1.0, X1.2, X1.4, X1.6, X2.0, X2.4,
 X3.0, X4.0 in distance
 Storage media:
 Built-in Flash, External USB-Memory stick
 Storage: 56 MB permanent image
 Body mark: >130 types
 Transducer auto-detection
 16-segment acoustic power output adjustment

Measurement & Calculation:

B-mode: distance, circumference, area, volume,
 angle, ratio, %stenosis
 M-mode: distance, time, heart rate (2 cycles), slope
 Software packages:
 General,gynecology, obstetrics, urology,
 small parts, cardiology, orthopedics

Display:

Date, Time, Probe Name, Probe Frequency, Frame Rate,
 Patient Name, Patient ID, Hospital Name, Measurement Values,
 Body Marks, Annotation, Probe Position, Full-image-region edit

Others:

Peripheral port: Video output X1
 VGA output port X1
 USB port X2 (1 host, 1 device)
 DICOM3.0 X1 (optional)
 Power supply: 100V-240V~50Hz/60Hz
 Dimensions: 359mm(L) X 320mm(W) X 270mm(H)
 Net weight: 12 kg

Standard Configurations:

D3 main unit
 10" non-interlaced monitor
 One transducer connector
 128 frames cine loop memory
 56MB built-in image storage
 Two USB ports (1 host, 1 device)
 Measurement & calculation software packages
 Convex array transducer:
 C361-1 (2.0/3.0/4.0/5.0/6.0 MHz)
 One cable holder

Options:

Linear array transducer:
 L741 (6.0/7.0/8.0/9.0/10.0 MHz)
 Endorectal transducer:
 E741 (6.0/7.0/8.0/9.0/10.0 MHz)
 Endovaginal transducer:
 E611-1 (4.5/5.5/6.5/7.5/8.5 MHz)
 Convex array transducer:
 C341 (2.0/3.0/4.0/5.0/6.0 MHz)
 Micro-convex array transducer:
 C321-1 (4.0/5.0/6.0 MHz)
 Two transducer connectors
 Video printer
 Laser printer
 Inkjet printer
 Biopsy guide
 DICOM 3.0
 Footswitch
 Mobile trolley
 Hand carried bag